

v

CATENA-X

PROCESS
SPECIFICATION



CX – 0006 Registration and Initial Onboarding

BUSINESS DOMAIN: ONBOARDING

Contact: standardisierung@catena-x.net

Note: Please specify the platform capability in the email subject line.

Version	1.1.1	
Date	06.03.2023	
Status	Published	
Author	Catena-X Automotive Network e.V.	
Version History		
Version	Date	Description of Change
1.1.0	30.11.2022	Initial version by Catena-X Association
1.1.1	06.03.2023	Addendum for Conformity Assessment added

TABLE OF CONTENTS

About this Document & Motivation	1
Disclaimer & Liability	2
Revisions & Update	3
Copyright & Trademarks	3
Management Summary	4
1 Introduction.....	5
2 Purpose of the Document.....	5
3 Scope of the Implementation.....	6
3.1 Preconditions and Dependencies	6
3.2 Constraints and Limitations	6
4 Registration Process	7
4.1 Contextual Description	7
4.2 Actors and Roles.....	8
4.3 Process Representation	8
4.3.1 Initial Contact.....	9
4.3.2 Invite	10
4.3.3 Registration.....	10
4.3.4 Onboarding for Initial Data Provisioning	15
4.3.5 Starting Point: Successful Registration.....	16
4.4 Proof of Implementation Conformity	20
5 Normative References.....	21
5.1 Catena-X Reference Implementations.....	21
5.2 Common Standards	21
Glossary	22
Abbreviations	22

ABOUT THIS DOCUMENT & MOTIVATION

Catena-X is the first open and collaborative data ecosystem. The goal is to provide an environment for the creation, operation, and joint use of end-to-end data chains along the entire automotive value chain. All partners are on an equal ground, have sovereign control over their data and no lock-in effects occur. This situation provides a sustainable solution for the digitalization of supply chains, especially for medium-sized and small companies, and supports the cooperation and collaboration of market participants and competitors.

The ever-growing Catena-X ecosystem will enable enormous amounts of data to be integrated and collaboratively harnessed. To ensure that these complex data volumes can be sent, received, and processed smoothly across all stages of the value chain, one language for all players: common standards.

The standards of the Catena-X data ecosystem define how the exchange of data and information in our network works. They are the basis for ensuring that the technologies, components, and processes used are developed and operated according to uniform rules.

Common standards create added value for all partners: Within our network, data flows more smoothly through interfaces. In addition, we avoid cumbersome individual IT solutions for sharing data with other partners. In the field of international standardization, Catena-X follows the proven international standardization institutions: ISO/IEC/ITU and CEN-CENELC/ETSI.

For users and data providers, implementation of standards will reduce the costs that would arise from adapting different systems. In addition, no important data is lost. On the contrary, it even becomes easier to collect data across companies. For operators and developers, standards will create a framework that provides reliable orientation and planning security.

The following document describes one of the reference implementations used in the Catena-X ecosystem and the requirements needed to implement it. Here, it serves as main resource to illustrate the following data model. It contains information starting from the format of the model, up to the conceptual and physical model. Defining the data model as a reference implementation enables faster information exchange and homogeneity across the Catena-X ecosystem.

DISCLAIMER & LIABILITY

The present document and its contents are provided “AS-IS” with no warranties whatsoever.

The information contained in this document is believed to be accurate and complete as of the date of publication, but may contain errors, mistakes, or omissions.

The Catena-X Automotive Network e.V. (“Catena-X”) makes no express or implied warranty with respect to the present document and its contents, including any warranty of title, ownership, merchantability, or fitness for a particular purpose or use. In particular, Catena-X does not make any representation or warranty, and does not assume any liability, that the contents of the document or their use (i) are technically accurate or sufficient, (ii) conform to any law, regulation and/or regulatory requirement, or (iii) do not infringe third-party intellectual property or other rights.

No investigation regarding the essentiality of any patents or other intellectual property rights has been carried out by Catena-X or its members, and Catena-X does not make any representation or warranty, and does not assume any liability, as to the non-infringement of any intellectual property rights which are, or may be, or may become, essential to the use of the present document or its contents.

Catena-X and its members are subject to the IP Regulations of the Association Catena-X Automotive Network e.V. which govern the handling of intellectual property rights in relation to the creation, exploitation and publication of technical documentation, specifications, and standards by Catena-X.¹

Neither Catena-X nor any of its members will be liable for any errors or omissions in this document, or for any damages resulting from use of the document or its contents, or reliance on its accuracy or completeness. In no event shall Catena-X or any of its members be held liable for any indirect, incidental or consequential damages, including loss of profits. Any liability of Catena-X or any of its members, including liability for any intellectual property rights or for non-compliance with laws or regulations, relating to the use of the document or its contents, is expressly disclaimed.

¹ https://catena-x.net/fileadmin/user_upload/Vereinsdokumente/Catena-X_IP_Regelwerk_IP_Regulations.pdf

REVISIONS & UPDATE

The present document may be subject to revision or change of status. Catena-X reserves the right to adopt any changes or updates to the present document as it deems necessary or appropriate.¹

The present document may be made available in electronic versions and/or in print. The content of any electronic and/or print versions of the present document shall not be copied or modified without the prior written authorization of Catena-X. In case of any existing or perceived difference in contents between any versions and/or in print, the prevailing version of the present document is the one made publicly available by Catena-X in PDF format.¹

If you find any errors in the present document, please send your comments to: standardisierung@catena-x.net

COPYRIGHT & TRADEMARKS

Any and all rights to the present document or parts of it, including but not limited under copyright law, are owned by Catena-X and its licensors.

The contents of this document shall not be copied, modified, distributed, displayed, made publicly available or otherwise be publicly communicated, in whole or in part, for any purposes, without the prior authorization by Catena-X, and nothing herein confers any right or license to do so.

The present document may include trademarks or trade names which are registered by their owners. Catena-X claims no ownership of these except for any which are indicated as being the property of Catena-X, and conveys no right to use or reproduce any such trademark or trade name contained herein. Mention of any third-party trademarks in the present document does not constitute an endorsement by Catena-X of products, services or organizations associated with those trademarks.

“CATENA-X” is a trademark owned by Catena-X registered for its benefit and the benefit of its members. Using or reproducing this trademark or the trade name of Catena-X is expressly prohibited.

No express or implied license to any intellectual property rights in the present document or parts thereof, or relating to the use of its contents, or mentioned in the present document is granted herein.

The copyright and the foregoing restrictions extend to reproduction in all media.

© Catena-X Automotive Network e.V. All rights reserved.

¹ <https://catena-x.net/de/standardisierung/catena-x-einfuehren-umsetzen/standardisierung/standard-library>

MANAGEMENT SUMMARY

This reference implementation addresses the internal system interfaces for company onboarding to Catena-X and the onboarding process itself. The content includes the necessary steps for a mandatory initial Catena-X company registration as well as the necessary functional building blocks of a minimal data provider service for Catena-X, while also containing APIs and process descriptions.

This document provides a first process description and defines the steps for a mandatory initial registration in the Catena-X network, which is the first mandatory step to gain access to the Catena-X network. The registration process, together with other services, forms the basis of trust for Catena-X.

1 INTRODUCTION

To become a participant of Catena-X, each applicant must go through a registration process. Registration is a mandatory requirement for all further activities within the Catena-X network. The registration process, along with other services, provides the foundation of trust for the Catena-X network. In the following, the individual process steps and their results are documented. The first part of the document deals with the initial registration process, which is the initial mandatory step for new Catena-X network participants. The second part addresses the steps necessary to create a first data offer in Catena-X.

2 PURPOSE OF THE DOCUMENT

The purpose of this document is to describe the structure of the registration process and the results of its individual process steps, which do not have to be implemented in the same manner, however, must lead to the exact same results, if implemented differently.

3 SCOPE OF THE IMPLEMENTATION

This chapter serves to situate the given reference implementation, to outline its prerequisites and to point out its limitations. Moreover, the standard applies to Catena-X Release 3 and following releases.

3.1 PRECONDITIONS AND DEPENDENCIES

The presented registration process interrelates with the technological realization based on the registration API introduced in ONB-004 and has additional dependencies to other Catena-X services, which are listed in chapter 5.

3.2 CONSTRAINTS AND LIMITATIONS

There are no constraints and limitations to this reference implementation document.

4 REGISTRATION PROCESS

In the following, the registration process at Catena-X will be presented, so it can be used in future implementations.

4.1 CONTEXTUAL DESCRIPTION

The high-level architecture of Catena-X is depicted in Figure 1. It consists of the following building blocks:

- Catena-X Core Services – Basic services, like for example authentication, used by all participants of Catena-X. The core services are standardized by the Catena-X consortium. There are two categories of core services: Core services – like the DAPS – of which there is exactly one service instance, and core services – like the portal – of which there can be at least one but also several service instances. More information can be found in the Catena-X Operating Model Whitepaper (published on the Catena-Website¹).
- Participants environments – A participant can offer and consume data. For this, he needs an Eclipse Dataspace Connector (EDC) as well as corresponding prosumer applications. The applications are provided by Catena-X application providers.
- The Gaia-X Digital Clearing House (GXDCH) consists of a notarization service and a compliance service and can be operated by another party. GXCDH is a Gaia-X component and must therefore comply with the corresponding Gaia-X standards. GXDCH on the one hand verifies the legitimacy of Catena-X participants, and on the other hand ensures the creation of Gaia-X compliant self-descriptions.

¹ www.catena-x.net

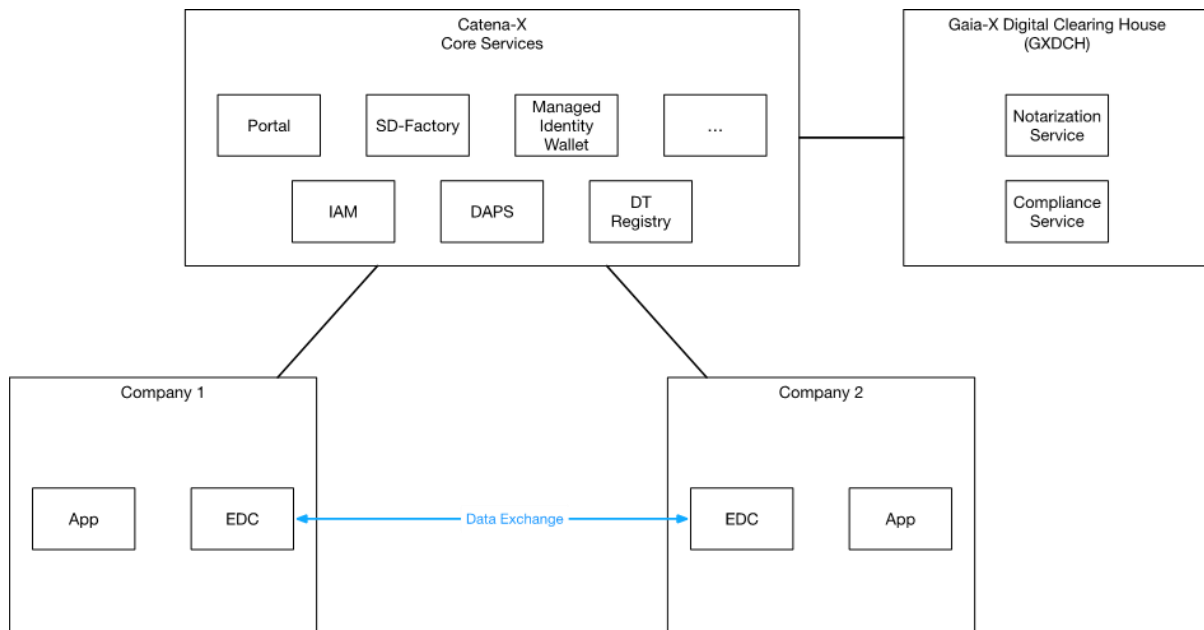


Figure 1: High-Level Architecture of Catena-X

4.2 ACTORS AND ROLES

The document is addressed to the following stakeholders:

- An operating company that operates the core services
- Companies that set up and operate their environments themselves
- Third party service providers who set up and operate environments for companies
- Providers of consulting services that can assist with onboarding and other issues

Throughout the document the following persona are distinguished:

- Catena-X administrator from the operating company
- Company administrator from the registering / registered company

4.3 PROCESS REPRESENTATION

The registration process described in this document serves as reference for future implementations and is shown in Figure 2. Successful registration is a mandatory prerequisite for any subsequent activity – such as creating or consuming offers – on Catena-X. The individual steps of the registration process are explained in the following paragraphs.

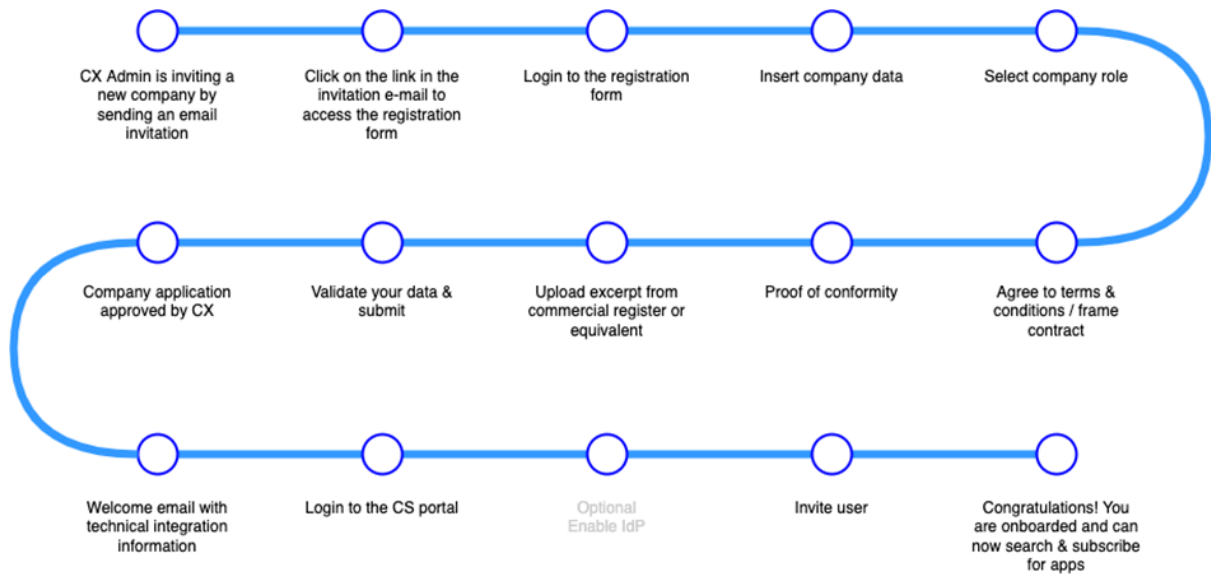


Figure 2: Catena-X – Registration Process

4.3.1 Initial Contact

Initial Contact	
Who	Any interested company
Outcome	<p>Catena-X follows an invitation-based registration process. Companies can contact Catena-X in one of the following ways:</p> <ul style="list-style-type: none"> A current member of Catena-X proposes another company as a candidate Candidates are approached at trade fairs or other events Companies contacting Catena-X via the Catena-X homepage Catena-X certified consultancies (not supported Release 2) <p>A company has been identified as a candidate for Catena-X The relevant contact persons in the company are identified</p>
Output	None

4.3.2 Invite

Invite	
Who	Catena-X administrator
A Catena-X administrator will send an invitation e-mail to the previously identified contact person of the company to be invited. The e-mail grants temporary access to the registration tool of Catena-X.	
Outcome	The onboarding company can now start with the registration process
Output	Invitation e-mail granting temporary access to the registration tool of Catena-X

4.3.3 Registration

The registration process may only be carried out by a person who is a member of the company and who is authorized to act on behalf of the company. The person needs to have at minimum a valid extract from the Commercial Register. Furthermore, a person authorized to sign the framework agreement with Catena-X is required.

4.3.3.1 Insert Company Data

Insert Company Data	
Who	Company administrator
The company admin is asked to add the company details. This can be done either manually or partially automatically if the master data for the company is already contained in BPDM which is the central business partner directory of Catena-X. At least the data necessary for creating a business partner entry in BPDM must be provided. For additional information, refer to BPM-001 Business Partner Number and BPM-002 Issuing Agency	
If the company admin does not have sufficient authority, it may be necessary to create additional users	
Additional users	Signing manager and Legal admin
Outcome	Company data entered Details for signing manager and legal admin specified
Output	None

4.3.3.2 Select Company Role inside the Catena-X Network

Select Company role inside the Catena-X Network

Who	Company administrator
-----	-----------------------

Each Catena-X member must select at least one of the following roles:

- Active participant
- App provider
- Service provider

Each role poses different qualifications that need to be checked as part of the conformity assessment (see step proof of conformity).

Outcome	Company role(s) selected
---------	--------------------------

Output	None
--------	------

4.3.3.3 Agree to Terms and Conditions

Agree to terms and conditions

Who	Company admin Signing Manager Legal admin
-----	---

Every company joining the association needs to accept the framework agreement that will state that the participant will be legally bound to observe the data policies associated with each data offer that the company will use. A participant provides consent by selecting the corresponding field (see below). Each data offer can have a separate set of access and usage policies assigned to it (Figure 3).

3

The role of your company

Please select one or more roles for your company to participant in Catena-X.
Don't worry, you can change it later.

Active participant (OEM, supplier, KMU/SME)

Please check and agree to the items listed below:

- Yes, I agree to the [terms and conditions](#) of the selected role.
- Yes, I agree to the [security regulations](#) of the selected role.

App provider

- provides apps (or other software services) within the Catena-X ecosystem including pricing, billing, provisioning or similar

It is the operating company's decision as to how consent is to be given.

Outcome	Terms and Conditions of Catena-X accepted
Output	None

3

The role of your company

Please select one or more roles for your company to participant in Catena-X.
Don't worry, you can change it later.

Active participant (OEM, supplier, KMU/SME)

Please check and agree to the items listed below:

- Yes, I agree to the [terms and conditions](#) of the selected role.
- Yes, I agree to the [security regulations](#) of the selected role.

App provider

- provides apps (or other software services) within the Catena-X ecosystem including pricing, billing, provisioning or similar

Figure 3: Role of your company

4.3.3.4 Proof of Conformity

Proof of conformity

Who	Only relevant for application and service provider
-----	--

Each application or service provider must proof conformity with relevant standards for his role. Conformity is assessed by an external conformity assessment body (CAB). The to be onboarded company must first complete conformity assessment and needs to receive the certificate of conformity before continuing with the next step.

It is the operating company's decision as to how consent is to be given.

Outcome	Conformity assessment accomplished
---------	------------------------------------

Output	Conformity certificate from CAB
--------	---------------------------------

4.3.3.5 Upload Certificates

Upload certificates

Who	Company admin Legal admin
-----	------------------------------

The legal admin must obtain an official proof of existence, such as an extract from the commercial register or country-specific equivalent, and upload it with the help of the company admin.

It is the operating company's decision as to how consent is to be given.

Outcome	Excerpt from the Commercial Register or country-specific equivalent uploaded to Catena-X
Output	None

4.3.3.6 Submit Registration

Submit registration

Who	Company admin
-----	---------------

Finally, the company admin validates the data entered and submits the registration formular. The registration can only be submitted if all mandatory fields have been filled in. The registration portal provides feedback of a successful transmission of data and notifies Catena-X admins to perform a four-eye check on the application.

Outcome	Catena-X validation process started
---------	-------------------------------------

Output	Validation request
--------	--------------------

4.3.3.7 Validation of Request and Creation of the Catena-X Access

Validation of request and creation of the Catena-X access	
Who	Catena-X admins
Catena-X administrators perform a two-man rule check on each application. Approving an application triggers the creation of initial access to Catena-X. This includes the points described under “Output”.	
Outcome	Company is now an official participant of Catena-X
Output	<ul style="list-style-type: none"> • Company admin is authorized to access Catena-X portal • BPDM will be triggered to create a golden record including a Business Partner Number (BPN), if the company is not yet stored in BPDM • A managed identity wallet (MIW) for the company (IAM-001 – Identity of Member Companies) will be instantiated • The MIW creates a Decentralized Identifier (DID) for the company • With the support of the GXDCH, a Gaia-X compliant self-description for the participant will be created and stored in the portal • A confirmation mail including all relevant data will be sent to the company admin

4.3.3.8 Integration of Corporate Identity Provider (Optional)

Integration of corporate identity provider (optional)	
Who	Catena-X admin Company admin
Authentication in Catena-X is built on top of OpenID Connect (OIDC). With that, identity federation can be configured between Catena-X and the company.	
Outcome	User authentication is federated from Catena-X to the company
Output	None

4.3.4 Onboarding for Initial Data Provisioning

After a company has successfully completed the registration process, it still needs to either purchase/integrate a business application to receive data, or setup tools to provide data.

The core service providers need to offer and follow different standards, so that the customer can achieve the above-mentioned. In order for customers to use a business app, the core service provider needs to offer a marketplace and an app listing process so that app providers can offer their services/apps. This is not the focus of this guideline.

This guideline focusses on the necessary tasks and endpoints that an onboarding service provider* needs to complete and offer, so that a customer in the form of a data provider is able to provide data to partners via the Catena-X network. This includes, but is not limited to, a use-case selection, the registration of an existing EDC, or the selection of a managed data provider service offering.

The following diagram (Figure 3) shows the high-level process steps that are necessary to enable a data provider.

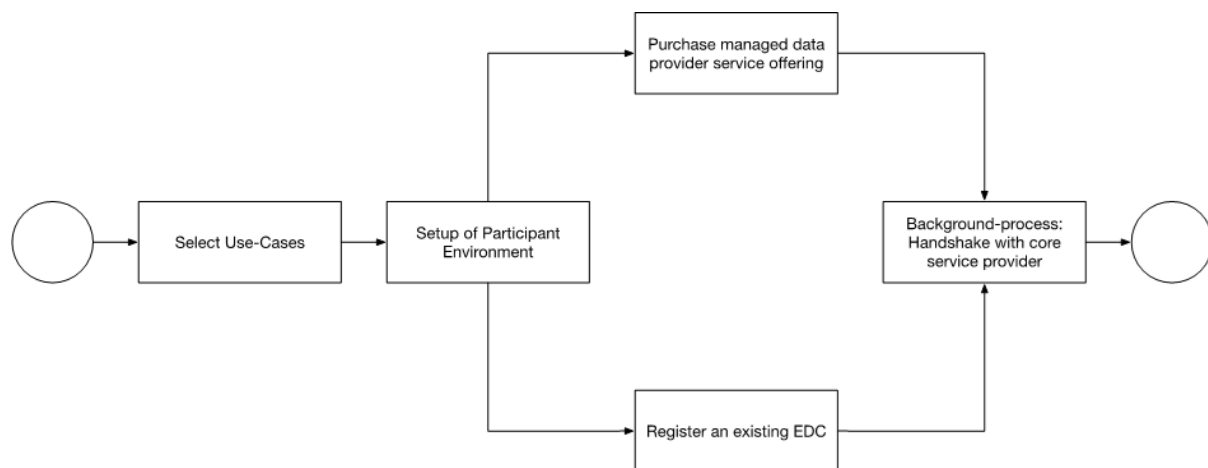


Figure 4: High-Level Onboarding Process

4.3.5 Starting Point: Successful Registration

The starting point for the onboarding of a data provider is the successful completion of the registration process, as described in the previous chapter. The company can access the Catena-X Portal, manage its users, view the app store and so on and so forth.

The Onboarding Service Provider must provide a functionality or screen to the company admin to start the onboarding process for data provisioning. To do so, he needs a button or screen on the portal, which needs to be provided by the onboarding service provider.

Note: The onboarding service provider could also be the core service provider in this case. There is no clear separation between the tasks of the two here.

4.3.5.1 Select Use Cases

Select Use Cases

Who	Data provider Onboarding Service Provider Core Service Provider
-----	---

Data is provided in the context of use-cases. To reduce the amount of information that a data provider needs to understand before he can start providing data, the “select use-cases” step serves as a pre-selection. Within that pre-selection step, the data provider chooses, within which use-cases he wants to participate. With respect to the use-case selected, supporting information will be provided such as:

- Use-case documentation – A description of the use-case and relevant information.
- Data Model Description – An explanation of the data that the customer needs to provide
- Usage Policies – The conditions under which data is (typically) shared with customers

In the case that the onboarding service provider is not also a core service provider, the information about a customer's use-case selection needs to be made available to the core-service provider.

Outcome	The customer has selected the use-cases he wants to provide data for. This information can later be used to for instance only show relevant semantic models, partners, or business apps to the customer. It will also be used to only show him relevant managed data provider service offerings later in the process.
---------	---

Output	As an output of this step, an additional database entry with the use-case selection of the customer exists.
--------	---

4.3.5.2 Setup of Participant Environment

Setup of Participant Environment

Who	Data provider Onboarding Service Provider
-----	--

A data provider in the context of Catena-X needs to fulfill certain standards so that he is able to deliver data to customers, such as offering data via an EDC, register digital twins or work with certain semantic languages. The data provider has two options to fulfil this task:

- Purchase a managed data provider service offering
- Setup and manage all the components himself

The onboarding service provider needs to offer both options to the data provider. The background tasks for the onboarding service provider are similar.

Outcome	The data provider is either forwarded to the app store, where he can purchase a managed data provider service offering (see below), or he is forwarded to a page where he can register his own connector within the Catena-X network (also see below).
Output	None

4.3.5.3 Purchase Managed Data Provider Service Offering

While developing and operating the managed data provider service offering is a task of the data prosumer service provider, the onboarding service provider* at least needs to list different available options as well as a mean to contact a data prosumer service provider so that the data provider can inquire possible offerings.

4.3.5.4 Endpoint – Ready for Data Deliver

The onboarding process is regarded as complete as soon as the data provider is able to provide data to his customers based on given Catena-X standards.

This guideline focusses on the onboarding service provider, please refer to the “Onboarding Guide” for data providers which can be found on the association homepage.¹

4.3.5.5 EDC Registration

An EDC must be registered in Catena-X to be recognized as a valid connector in the dataspace. This process includes the registration of an EDC in the Dynamic Attribute Provisioning Service (DAPS) as well as the creation of a self-description. The process can be manual (UI-based) or automated.

The architecture of the reference implementation is depicted below. The SD factory provides an interface for the creation of self-descriptions. Analogously, the DAPS registration service provides an interface for the registration of EDCs in the DAPS.

¹ <https://catena-x.net/en/catena-x-einfuehren-umsetzen/einfuehrung-von-catena-x>

The access to the interfaces is protected, corresponding credentials must be available.

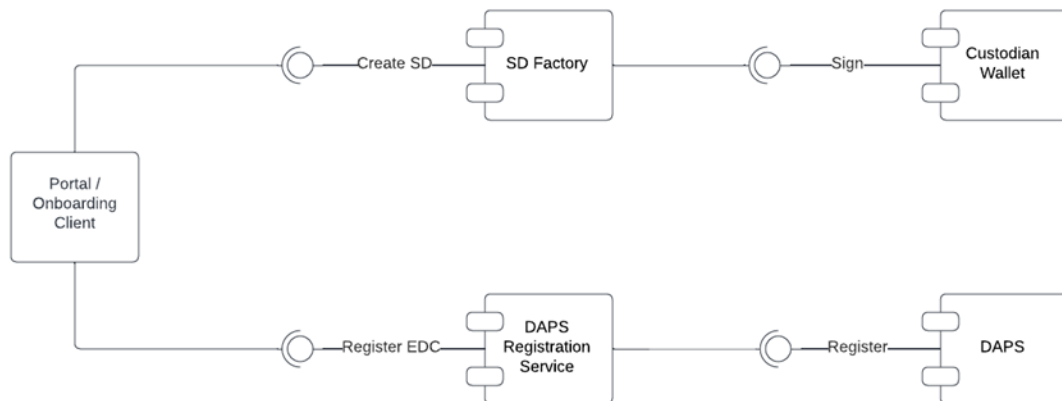


Figure 5: Reference Implementation - EDC Registration

4.3.5.6 Self-Description

Self Description

Catena-X must be Gaia-X compliant, this is achieved, amongst others, through the self-descriptions. Self-descriptions store attributes like the company's registration number or the EDC endpoint in a cryptographically verifiable way. For additional information refer to the Gaia-X Trust Framework.

Outcome	Gaia-X compliance
Output	Self-description (JSON-LD document)

4.3.5.7 DAPS

DAPS

The DAPS is the identity provider for the EDCs that wish to participate in a data exchange. It authenticates the interacting connectors and is therefore a central trust anchor in the Catena-X network. The following data is stored in DAPS:

- Public key certificate
- BPN
- Endpoint of EDC

The public key certificate must be created by the onboarding company or the corresponding service provider. The business partner number can be retrieved from BPDm.

Outcome	DAPS can now successfully authenticate the registered EDC
---------	---

Output	Entry in DAPS
--------	---------------

4.4 PROOF OF IMPLEMENTATION CONFORMITY

Each business network provider providing onboarding services must proof its conformity with this standard by:

- Submitting a process description of its implemented onboarding process and
- Additionally, the CAB may assess the conformity of the onboarding process by performing an audit

The business network provider can offer its services only after successful verification of conformity.

5 NORMATIVE REFERENCES

The following references refer to related Catena-X reference implementations and external standards. This is intended to place the present reference implementation in the context of existing references.

5.1 CATENA-X REFERENCE IMPLEMENTATIONS

CATENA-X REFERENCE IMPLEMENTATIONS	
CX - 0010	Business Partner Number
CX - 0011	Issuing Agency
CX - 0013	Identity of Member Companies
CX - 0014	Employees and Technical Users
CX - 0007	Minimal Data Provider Services Offering
CX - 0009	Catena-X Registration API

5.2 COMMON STANDARDS

Common Standards	
Gaia-X	Trust Framework

GLOSSARY

ABBREVIATIONS

Abbreviations	Description
BPN	Business Partner Number
DAPS	EDC Identity Provider
EDC	Eclipse Dataspace Connector
GXDCH	Gaia-X Digital Clearing House

ADDENDUM FOR CONFORMITY ASSESSMENT

DISCLAIMER

The following pages are not part of the standard documentation.

CATENA-X

ADDENDUM FOR CONFIRMITY
ASSESSMENT



CX – 0006 REGISTRATION AND INITIAL ONBOARDING

PLATFORM CAPABILITY: ONBOARDING

Contact: standardisierung@catena-x.net

Note: Please specify the platform capability in the subject line.

TABLE OF CONTENTS

About this Document and Motivation.....	1
Disclaimer & Liability	2
Revisions & Update	3
Copyright & Trademarks	3
Management Summary	4
1 Introduction.....	5
1.1 AUDIENCE & SCOPE.....	5
1.2 CONTEXT.....	5
1.3 ARCHITECTURE OVERVIEW.....	5
1.4 CONFORMANCE	6
1.5 PROOF OF CONFORMITY	6
2 Scope of the Implementation.....	8
2.1 constraints and limitations.....	8
3 Process	9
3.1 Contextual description	9
3.2 Actors and Roles.....	9
3.3 Process Representation	9
3.4 Process Description.....	10
3.5 Technical Integration.....	12
3.6 OnboardinG for initial data provisioning.....	12
4 Normative References.....	13
4.1 CX- Standards.....	13
4.2 Common Standards	13

ABOUT THIS DOCUMENT AND MOTIVATION

The **standards of the Catena-X data ecosystem** define how the exchange of data and information in our network works. They are the basis for ensuring that the technologies, components, and processes used are developed and operated according to uniform rules.

The addendum for conformity assessment clarifies the requirements and scope for each standard. It contains conformity assessment criteria (CAC) that specify how a participant can receive a certificate for the correct application of the standard.

DISCLAIMER & LIABILITY

The present document and its contents are provided “AS-IS” with no warranties whatsoever.

The information contained in this document is believed to be accurate and complete as of the date of publication, but may contain errors, mistakes or omissions.

The Catena-X Automotive Network e.V. (“Catena-X”) makes no express or implied warranty with respect to the present document and its contents, including any warranty of title, ownership, merchantability, or fitness for a particular purpose or use. In particular, Catena-X does not make any representation or warranty, and does not assume any liability, that the contents of the document or their use (i) are technically accurate or sufficient, (ii) conform to any law, regulation and/or regulatory requirement, or (iii) do not infringe third-party intellectual property or other rights.

No investigation regarding the essentiality of any patents or other intellectual property rights has been carried out by Catena-X or its members, and Catena-X does not make any representation or warranty, and does not assume any liability, as to the non-infringement of any intellectual property rights which are, or may be, or may become, essential to the use of the present document or its contents.

Catena-X and its members are subject to the IP Regulations of the Association Catena-X Automotive Network e.V. which govern the handling of intellectual property rights in relation to the creation, exploitation and publication of technical documentation, specifications, and standards by Catena-X.¹

Neither Catena-X nor any of its members will be liable for any errors or omissions in this document, or for any damages resulting from use of the document or its contents, or reliance on its accuracy or completeness. In no event shall Catena-X or any of its members be held liable for any indirect, incidental or consequential damages, including loss of profits. Any liability of Catena-X or any of its members, including liability for any intellectual property rights or for non-compliance with laws or regulations, relating to the use of the document or its contents, is expressly disclaimed.

¹ https://catena-x.net/fileadmin/user_upload/Vereinsdokumente/Catena-X_IP_Regelwerk_IP_Regulations.pdf

REVISIONS & UPDATE

The present document may be subject to revision or change of status. Catena-X reserves the right to adopt any changes or updates to the present document as it deems necessary or appropriate.¹

The present document may be made available in electronic versions and/or in print. The content of any electronic and/or print versions of the present document shall not be copied or modified without the prior written authorization of Catena-X. In case of any existing or perceived difference in contents between any versions and/or in print, the prevailing version of the present document is the one made publicly available by Catena-X in PDF format.¹

If you find any errors in the present document, please send your comments to: standardisierung@catena-x.net

COPYRIGHT & TRADEMARKS

Any and all rights to the present document or parts of it, including but not limited under copyright law, are owned by Catena-X and its licensors.

The contents of this document shall not be copied, modified, distributed, displayed, made publicly available or otherwise be publicly communicated, in whole or in part, for any purposes, without the prior authorization by Catena-X, and nothing herein confers any right or license to do so.

The present document may include trademarks or trade names which are registered by their owners. Catena-X claims no ownership of these except for any which are indicated as being the property of Catena-X, and conveys no right to use or reproduce any such trademark or trade name contained herein. Mention of any third-party trademarks in the present document does not constitute an endorsement by Catena-X of products, services or organizations associated with those trademarks.

“CATENA-X” is a trademark owned by Catena-X registered for its benefit and the benefit of its members. Using or reproducing this trademark or the trade name of Catena-X is expressly prohibited.

No express or implied license to any intellectual property rights in the present document or parts thereof, or relating to the use of its contents, or mentioned in the present document is granted herein.

The copyright and the foregoing restrictions extend to reproduction in all media.

© Catena-X Automotive Network e.V. All rights reserved.

¹ <https://catena-x.net/de/standard-library>

MANAGEMENT SUMMARY

To become a participant of Catena-X, each applicant must go through a registration process. Registration is a mandatory requirement for all further activities within the Catena-X network. The registration process, along with other services, provide the foundation of trust for the Catena-X network.

1 INTRODUCTION

To become a participant of Catena-X, each applicant must go through a registration process. Registration is a mandatory requirement for all further activities within the Catena-X network. The registration process, along with other services, provide the foundation of trust for the Catena-X network.

The document deals with the initial registration process which is the initial mandatory step for new Catena-X network participants.

1.1 AUDIENCE & SCOPE

This section is non-normative

This standard is relevant for the following roles:

- Core Service Provider
- Onboarding Service Provider

1.2 CONTEXT

This section is non-normative

The registration API is used as part of the registration process.

1.3 ARCHITECTURE OVERVIEW

This section is non-normative

Figure 1 shows a high-level view of a section of Catena-X. It consists of the following building blocks:

- Catena-X Core Services – Basic services, like for example authentication, used by all participants of Catena-X. The core services are standardized by the Catena-X consortium. There are two categories of core services. Core services – like the DAPS – of which there is exactly one service instance and core services – like the portal – of which there can be at least one but also several service instances. More information can be found in the Catena-X Operating Model Whitepaper (published on www.catena-x.net).
- Participants environments – A participant can offer and consume data. For this, he needs an Eclipse Dataspace Connector as well as corresponding prosumer applications. The applications are provided by Catena-X application providers.

- The Gaia-X Digital Clearing House (GXDC) consists of a notarization service and a compliance service and can be operated by another party. GXDC is a Gaia-X component and must therefore comply with the corresponding Gaia-X standards. GXDC on the one hand verifies the legitimacy of Catena-X participants and on the other hand it ensures the creation of Gaia-X compliant self-descriptions.

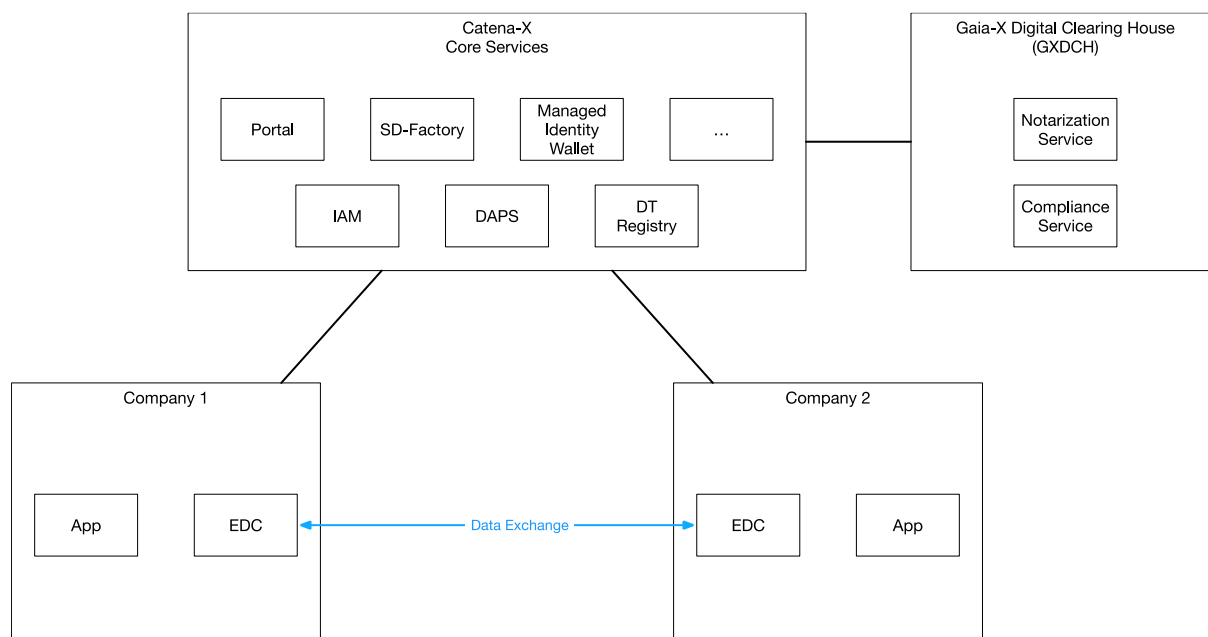


Figure 1 High-level view of a section of Catena-X

1.4 CONFORMANCE

As well as sections marked as non-normative, all authoring guidelines, diagrams, examples, and notes in this specification are non-normative. Everything else in this specification is normative.

The key words MAY, MUST, MUST NOT, OPTIONAL, RECOMMENDED, REQUIRED, SHOULD and SHOULD NOT in this document are to be interpreted as described in [BCP 14 \[RFC2119\]](#) [[RFC8174](#)] when, and only when, they appear in all capitals, as shown here.

1.5 PROOF OF CONFORMITY

This section is non-normative

All participants and their solutions will need to prove, that they are conform with the Catena-X standards. To validate that the standards are applied correctly, Catena-X employs Conformity Assessment Bodies (CABs).

Core service providers and onboarding service providers implementing their own registration solution MUST demonstrate compliance by:

- Providing documentation of the registration process implemented.
- Proofing that the registration process includes all the mandatory steps as defined in Chapter 3

Proofing that the registration process implemented delivers the mandatory results as detailed in Chapter 3.

2 SCOPE OF THE IMPLEMENTATION

2.1 CONSTRAINTS AND LIMITATIONS

The registration process described in this document serves as reference for future implementations and is shown in Figure 2. Successful registration is a mandatory prerequisite for any subsequent activity – such as creating or consuming offers – on Catena-X.

3 PROCESS

3.1 CONTEXTUAL DESCRIPTION

To become a participant of Catena-X, each applicant must go through a registration process. Registration is a mandatory requirement for all further activities within the Catena-X network. The registration process, along with other services, provide the foundation of trust for the Catena-X network.

3.2 ACTORS AND ROLES

Actors	Description
The to be onboarded company	The company that wants to register to Catena-X
Core Service Provider	Core Service Providers run core services that enable the basic functionality of the Catena-X data space (e.g., Identity Provider, Marketplace). They can also act as an onboarding service provider.
Onboarding service provider	On-Boarding Service Providers enable data provider/consumer to be integrated into the Catena-X network.

3.3 PROCESS REPRESENTATION

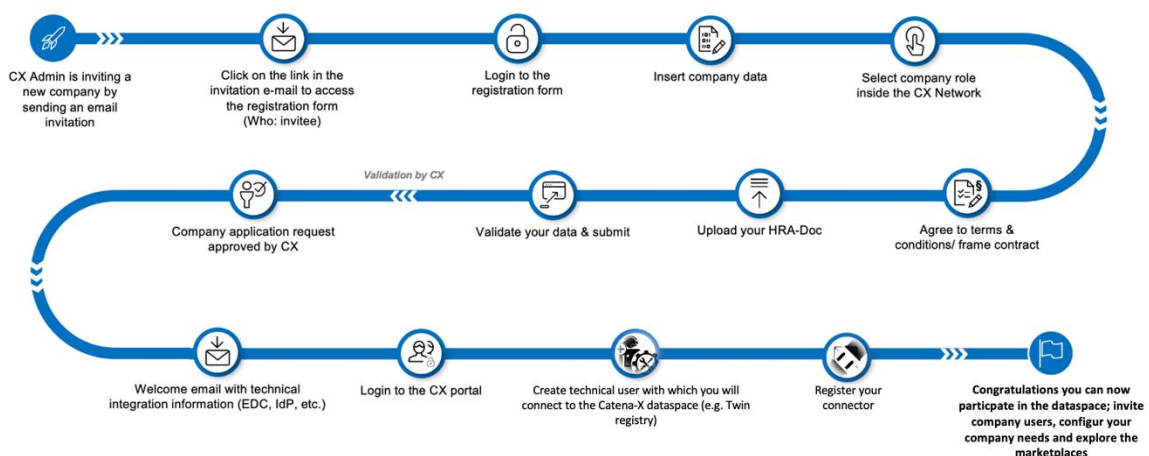


Figure 2: Catena-X Registration Process

3.4 PROCESS DESCRIPTION

Initial Contact – non normative

Catena-X follows an invitation-based registration process. Companies can contact Catena-X in one of the following ways:

- A current member of Catena-X proposes another company as a candidate
- Candidates are approached at trade fairs or other events
- Companies contacting Catena-X via the Catena-X homepage

Invite

An onboarding service provider / core service provider **MUST** provide a secure access to register to legal entity to the Catena-X dataspace.

Registration

The to be onboarded company **MUST** provide the company details required

- Company Name
- Street + House number/Postbox
- Postal Code (depending on country)
- City
- Country
- Unique Identifier (based on country)
- Region / State (optional - depending on country)

Select company role inside the Catena-X network

The to be onboarded company **MUST** be able to select at least one of the following roles:

- Active Participant/Data Provider / Consumer
- App Provider/Business Application Provider
- Service Provider/Enablement Service Provider/Onboarding Service Provider/Consulting Services Provider

There may be other roles in the future.

Agree to terms and conditions

The to be onboarded company **MUST** accept the framework agreement, which consists of the operator terms; dataspace terms and CX terms (depending on the selected company role).

Proof of conformity

Each application or service provider **MUST** be able to proof conformity with relevant standards for the selected company role. Conformity is assessed by an external conformity assessment body (CAB). The to be onboarded company **MUST** first complete the conformity assessment and need to be enabled to provide the certificate of conformity as part of the registration application.

Upload excerpt from commercial register or equivalent

Each company to be onboarded **MUST** be enabled to provide proof of identity in the form of an extract from the commercial register or equivalent (depending on the legal entity location of the to be onboarded company).

Submit registration

Onboarding service providers and core service providers **MUST** provide a mechanism for submitting the registration and triggering subsequent activities.

Validation of request and creation of the Catena-X access

- Onboarding service providers / core service providers **MUST** perform a four eyes check of the registration company application.
- Onboarding service providers / core service providers **MUST** review the proof of conformity of the registering company.
- In order to avoid duplicates, onboarding service providers / core service providers **MUST** check whether the company to be onboarded is already registered.
- Onboarding service providers / core service providers **MUST** ensure that a Business Partner Number (BPN) exists or is created and linked to the company being registered.
- Onboarding service providers / core service providers **MUST** ensure that a Managed Identity Wallet is created for the company to be onboarded. The BPN **MUST** be stored in the Managed Identity Wallet as a verifiable credential and serves as a unique ID.
- Onboarding service providers / core service providers **MUST** ensure that a company compliance check is executed by an official Gaia-X Digital Clearing House (GXDCH). In alignment with onboarding service providers / core service providers, GXDCH issues verifiable credentials.

- Onboarding service providers / core service providers **MUST** create a Self-Description (SD) of the Legal Person as part of the application verification process. The SD **MUST** be stored in a central location and **MUST** be in line with the GAIA-X standards/guidelines.
- Only when all checks have been successfully passed, the onboarding service providers / core service providers **MUST** provide access to the portal. If one or several application validation steps have not been passed, the onboarding service providers / core service providers **MUST** reject the registration or defer it for revision.
- Onboarding service providers / core service providers **MUST** provide feedback (success/rejection/revision) to the to be registered company.

If the Onboarding Service Provider and the Core Service Provider are different entities, this step only affects the Onboarding Service Provider.

3.5 TECHNICAL INTEGRATION

Integration of corporate identity provider

Onboarding service providers / core service providers **MUST** enable onboarding companies to get known about the necessary steps to complete the technical onboarding (incl. DAPS Auth, connector registration, technical user creation, etc.)

Onboarding service providers / core service providers **MAY** support with the technical onboarding (incl. DAPS Auth, connector registration, technical user creation, etc.).

3.6 ONBOARDING FOR INITIAL DATA PROVISIONING

Chapter 2 “ONBOARDING FOR INITIAL DATA PROVISIONING” of standard CX-0006 Registration and initial onboarding is not part of this addendum.

4 NORMATIVE REFERENCES

4.1 CX- STANDARDS

- CX - 0010 BUSINESS PARTNER NUMBER (BPN)
- CX - 0011 ISSUING AGENCY
- CX - 0013 IDENTITY OF MEMBER COMPANIES
- CX - 0009 CATENA-X REGISTRATION API

4.2 COMMON STANDARDS

- Gaia-X Trust Framework (<https://gaia-x.gitlab.io/policy-rules-committee/trust-framework/>)
- Gaia-X Framework (<https://docs.gaia-x.eu/framework/>)
- GXDCH (<https://gaia-x.eu/gxdch/>)